

FREIGHTLINER[®]

Run Smart™

FREIGHTLINER

FLD SD



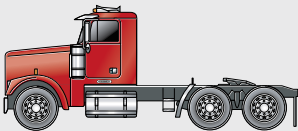
Engineered to withstand severe punishment.



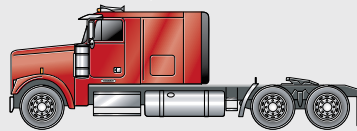
Freightliner's FLD SD is built to take on your toughest challenges. With a proven track record for durability and dependability, the FLD SD combines time-tested performance with the latest advances in engineering and technology. The FLD SD truly lives up to the name severe-duty. It features a heavy-duty chassis with frame rails rated to

120,000 psi, a durable yet lightweight reinforced aluminum cab that minimizes vibration and noise, engine options up to 550 horsepower and a 1,750 square inch radiator for optimal cooling. Built to boost your bottom line, the FLD SD is tough on the outside, comfortable on the inside and always ready for a hard day's work—no matter how severe.

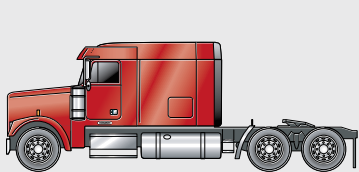
The FLD SD is available in both day cab and sleeper configurations. Sleeper configurations are 48" Flat Roof, 70" Mid-Roof or 70" Raised Roof.



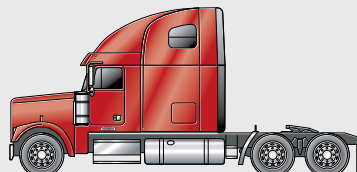
DAY CAB



48" FLAT ROOF

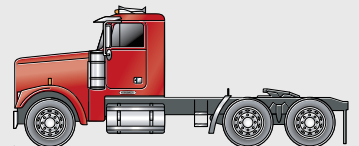


70" MID-ROOF

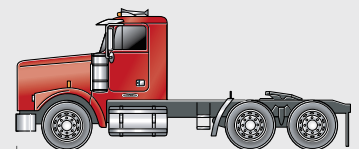


70" RAISED ROOF

Choose the set-forward axle to allow maximum weight distribution for carrying heavy loads, or the set-back axle to provide greater maneuverability in tight spots.



SET-FORWARD AXLE
30" | 90" |
120 BBC



SET-BACK AXLE
45" | 75" |
120 BBC

Interiors that make any job less severe.

This truck's efficiency extends to the human element as well. The well-appointed cab has plenty of elbow and leg room, keeping the driver comfortable and secure. An ergonomically designed wraparound dash puts switches and controls within easy reach. Standard equipment includes a comfortable Bostrom air-ride driver's seat, power steering and woodgrain instrument panel, available in Driftwood Burl (*right*) or optional Rosewood (*below*). There's even extra storage space in the overhead console.



On the outside, strategically placed grab handles, wide steps with aggressive tread and a large door opening provide easy entry and exit.

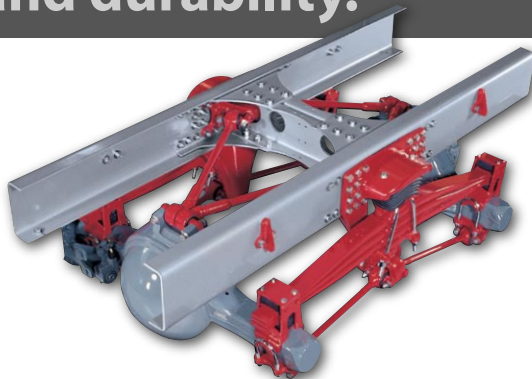


It may be hard to believe that a truck so tough on the outside could be this luxurious on the inside. The Chapparral™ upholstery package comes in a variety of colors and is available in vinyl or cloth. The 70" raised roof SleeperCab (*shown here*) offers plenty of storage space and a stow-away upper bunk.

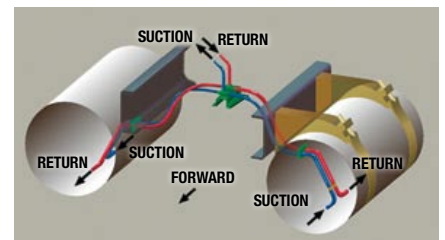
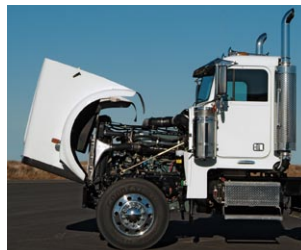


Built for strength and durability.

Freightliner TufTrac® suspension was designed to provide maximum traction in high articulation environments. The rubber-isolated pivot points and parabolic taper-leaf springs ensure a smooth ride, whether loaded or unloaded, minimizing wear and tear on the truck and the driver.



- Ⓐ Optional dual cowl-mounted **air cleaners** are the smart choice for vehicles operating in dusty conditions where maximum air cleaning capacity is crucial.
- Ⓑ The optional **wraparound windows** provide an even better view for safety while backing up.
- Ⓒ The **fiberglass hood** tilts almost 90 degrees for unparalleled engine access. See-through fluid reservoirs speed checking of fluid levels.



The raised fuel tanks provide excellent ground clearance. There are no fittings at the bottom of either fuel tank and no crossover lines between tanks.

The patented EquiFlo® inboard fuel system keeps fuel evenly distributed and cool, delivering reliable fuel handling even under the most demanding conditions.

Ⓐ

Ⓑ

Ⓒ

Standard features

- Detroit Diesel® Series 60 14-liter engine
- Eaton® Fuller® 10-speed manual transmission
- Durable, lightweight aluminum cab
- Fiberglass hood with bright finish steel grille surround
- 2-piece flat glass windshield
- Air cab mounts
- Meritor® MFS-12 front axle rated at 12,000 lbs.
- Meritor® RT-40-145 rear axle rated at 40,000 lbs.
- 100-gallon round aluminum fuel tank
- High-capacity radiators:
1,500 sq. in. on set-forward axle
1,750 sq. in. on set-back axle
- Delco Remy 160 amp alternator
- 20" x 36" rear window
- Bostrom 915 mid-back Talladega driver seat
- Ergonomic wraparound dash
- Woodgrain instrument panel
- Dual drive 4-spring flat leaf suspension

Options

- Truck or tractor applications
- Day Cab or 48" Flat Roof, 70" Mid-Roof or 70" Raised Roof SleeperCab
- Caterpillar® C15 engine
- Mercedes-Benz MBE 4000 12.8L engine
- Set-forward or set-back axle configurations
- Dual stainless steel cowl-mounted air cleaners
- Steer axles rated from 12,000 to 20,000 lbs.
- Drive axles rated from 40,000 to 70,000 lbs.
- Tridem axles
- Pusher and tag axles
- Maintenance-free bushings
- AirLiner® or TufTrac® rear suspensions
- Hendrickson vocational air or walking beam suspensions
- Rear engine power takeoffs
- Wide range of Eaton or Allison® transmissions
- Large selection of frames and inserts for optimal strength, weight and cost
- Rosewood dash and bright finish gauges
- Variety of cloth or vinyl interiors

Manufacturer	Engine Type	Horsepower	Ft.-Lbs.Torque
Detroit Diesel Series 60	14.0L	425 - 515	1,450
Caterpillar	C15	435 - 550	1,550 - 1,850
Mercedes-Benz	MBE 4000 12.8L	350 - 450	1,350 - 1,650

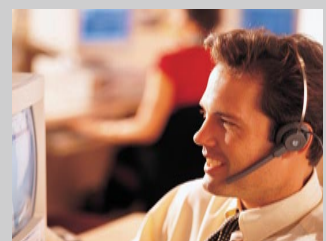
Service that's as reliable as our trucks.

Your job is tough enough. So when you purchase a Freightliner, you can rest easy knowing there's a team of professionals ready to back you up. With every Freightliner, you can depend on:

- Ⓐ **400 dealers**, some open 24 hours a day, seven days a week.
- Ⓑ Our **24-hour Customer Assistance Center hotline**, available seven days a week to expedite assistance for roadside breakdowns, find locations for dealer service and more. Call 1-800-FTL-HELP.
- Ⓒ **DaimlerChrysler Truck Financial** to help you evaluate which **finance plan or lease** best suits your budget.



Ⓐ



Ⓑ

DaimlerChrysler Truck Financial

Ⓒ



For the Freightliner Trucks Dealer nearest you, call 1-800-FTL-HELP. www.freightlinertrucks.com 15M, 3/07.
FTL/MC-B-768. Specifications are subject to change without notice. Freightliner Trucks is registered to ISO 9001.
Copyright 2007, Freightliner LLC. All rights reserved. Freightliner Trucks is a member of the Freightliner Group.
Freightliner is a DaimlerChrysler company.